



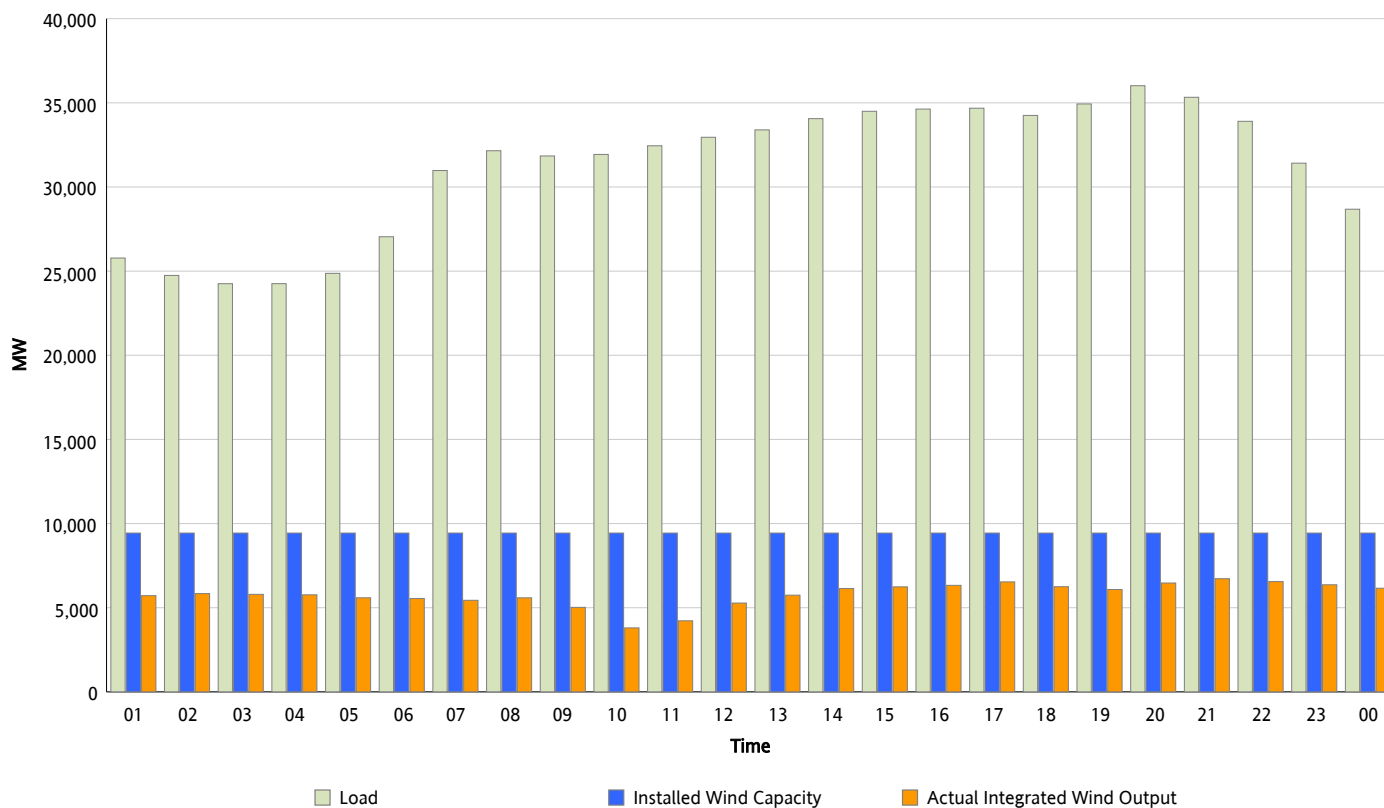
## ERCOT Grid Operations

### Wind Integration Report : 03/01/2012

Peak Load	36,019 MW
Load Peak Hour (HE)	20
Wind Over Peak	6,468 MW
Wind Record 10/07/11	7,400 MW
Max Wind Value*	6,894 MW
Wind Peak Time	20:08
Wind Integration %	19.34 %

#### Hourly Average Actual Load vs. Actual Wind Output

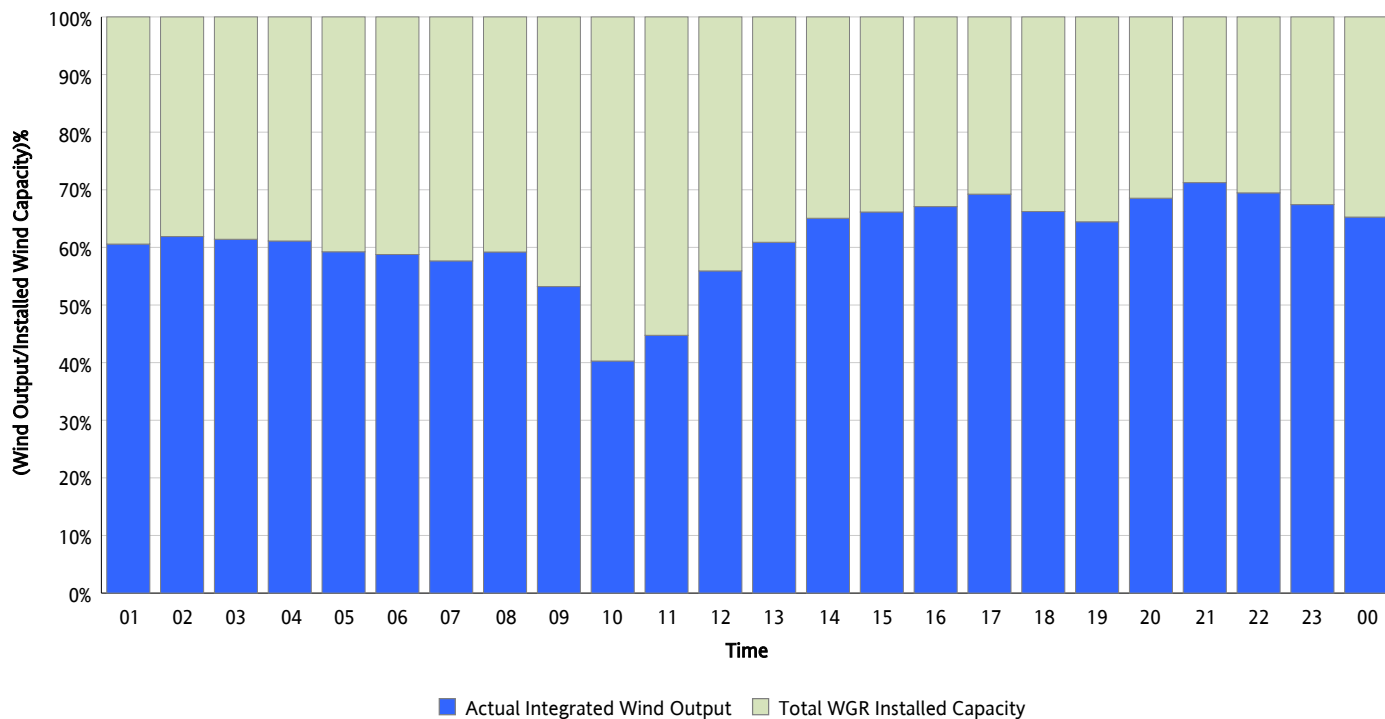
03/01/2012



\* Wind Max represents the instantaneous value and the rest of the values are integrated over the hour

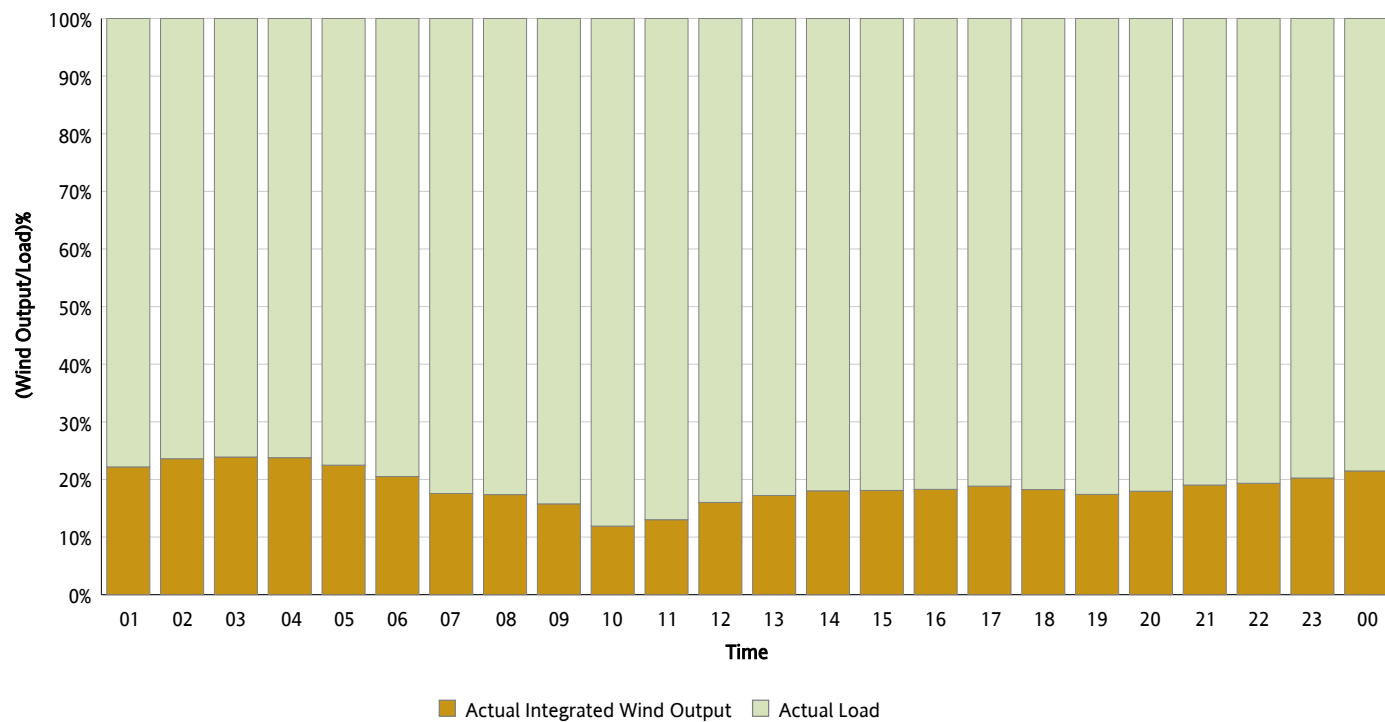
## Actual Wind Output as a Percentage of the Total Installed Wind Capacity

03/01/2012



## Actual Wind Output as a Percentage of the ERCOT Load

03/01/2012



## ERCOT Load vs. Actual Wind Output

02/23/2012 - 03/01/2012

